

Woman's Day

VOLUME V, NUMBER 4

Home Improvement

**GAIN
SPACE
WITHOUT
ADDING
ON**

(PAGE 70)

**AWARD-
WINNING
WHOLE-HOUSE
MAKEOVERS**

**FITTING
IN AN
EXTRA
BATH**

**HEATING
SYSTEMS
THAT SAVE
YOU MONEY**



Woman's Day
Home Ideas Series

U.S. \$3.99 Canada \$4.50
Display Until October 24, 1995

HOME

Clean lines, basic materials and an open layout

AWAY FROM

are all features of this stunning vacation home.

HOME

Contrasting siding materials and stacked window arrangements define the planes of this contemporary-style home on an island in Puget Sound. They also reflect indigenous Pacific-Northwest influences.

PHOTOGRAPHS: NORTHLIGHT PHOTOGRAPHY





Left: Organic materials with natural finishes turn the stairs into a handsome transition between the formal main floor and the less traditional second floor. They include oak treads, fir skirting, cedar ceiling planks and a wire mesh balustrade.



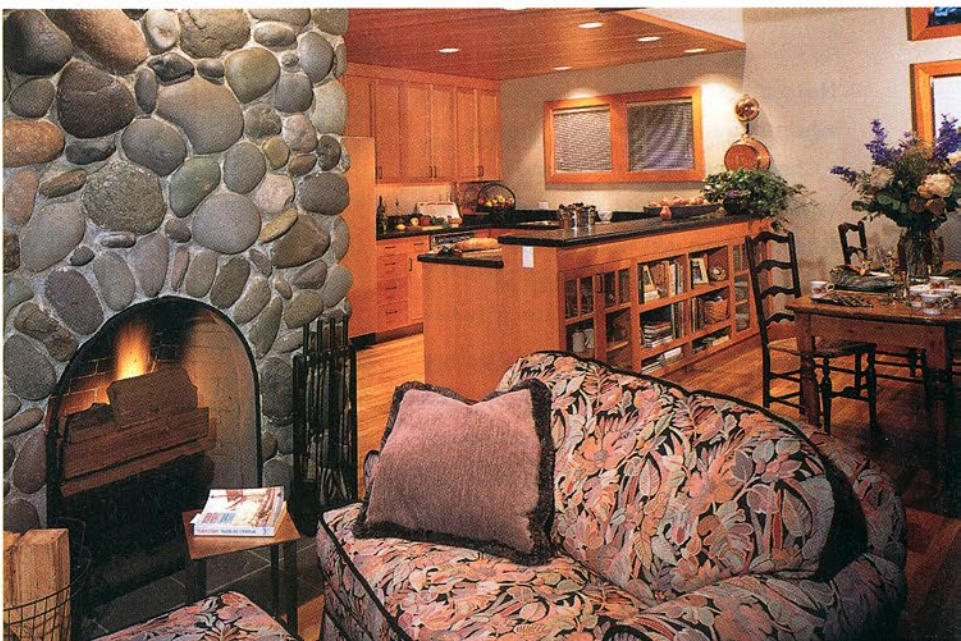
Above right: Maximizing interior space was a main objective, so cabinets and shelves were built into the wall on the living room side of the stairwell. The huge round window in the gable throws light into the interior. In addition to light, the volume of the partially vaulted ceiling and the unifying wood trim magnify the home's space.

Below right: On the partitionless main floor, the living room spreads out in front of the fireplace. A two-tier peninsula countertop sets the kitchen apart and blocks its operations from view. See *Buying Guide* for details.

H O M E A W A Y F R O M H O M E

Like a sentry, this simple vacation house commands the lookout position on Puget Sound's Whidbey Island. Set on a hillock and framed by clumps of fir trees, it offers a spectacular view of both the inlet and Mt. Baker to the east. This is the location and the views the homeowners wanted, but achieving them took some inventiveness.

When he designed the house, Seattle architect Todd Soli was restricted by the fir trees, which couldn't be removed, and by the home's narrow lot. He had to build the foundation and first floor of the house parallel to the lot lines, but that orientation did not capture the desired views. So he took creative architectural license and placed the second floor dormer away from the house at





The bathroom's round window repeats a window found in the home's other gable. It adds light and a view to the bathroom. The glass-block shower stall wall permits privacy without blocking light.



H O M E A W A Y F R O M H O M E

BREAKING GROUND

Here are some tips to keep in mind when planning a vacation home.

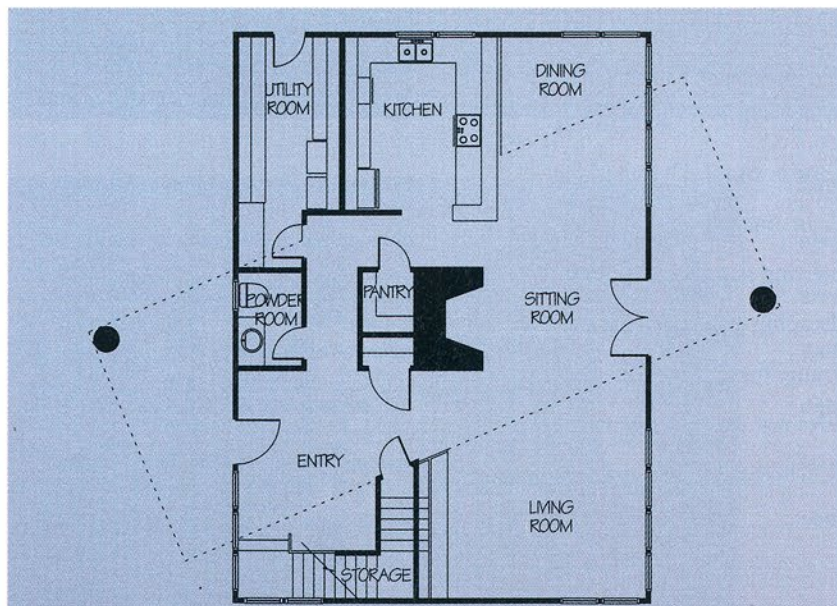
- **Check local zoning laws and covenants to be sure you can build the type of house you want on the lot.**
- **Check for the availability of fresh water.**
- **Be sure the property can support a septic system.**
- **Make sure the location will be serviced by utilities.**

an angle that faces Mt. Baker. Skewed on the home's axis, the dormer's floor runs back through the house at an angle so that it creates a second floor that overlooks the main floor and puts a vaulted ceiling over some of the space below.

On the exterior, Soli emphasized the home's beachfront setting and simple lines by using traditional shingles on the main body and contrasting fishing-shack style metal siding on the cantilevered dormer. This dramatic switch in building materials marks the transition to the less traditional second floor.

The interior of the 1,800-square-foot house is open, spacious and filled with light from the huge window walls. The main floor rooms revolve around a fieldstone fireplace placed in the center of the house. Their various functions are defined by the placement of their furniture in relationship to the hearth. Natural wood finishes and flowing light maximize the space.

—S.R.



The home's cantilevered and angled dormer holds the master bedroom, *above*. Two walls of stacked square windows give the homeowners a sweeping view of Puget Sound.

The first floor of the house is really a rectangle built around the stone hearth, as shown in the plan, *left*. The only partitions on this floor enclose the powder room and utility room. The second floor, shown by the dotted line on the plan, holds the master suite and another bedroom.